



BIRMINGHAM CITY  
University

# WELCOME TO BCU

---

The University *for* Birmingham

# OUR MISSION

University *for* Birmingham

Enabling personal  
transformation

Our measures of success:

- Meeting demand
- The STEAM agenda
- Environmental sustainability





# OUR HERITAGE



BIRMINGHAM CITY  
University

- Our history can be traced through a succession of predecessor institutions to as far back as 1843.
- We achieved university status in 1992 as the University of Central England.
- In 2007 we changed our name to Birmingham City University, reflecting our commitment to, and pride in, our home city.



# SIZE AND SHAPE



Overall  
**SIZE**  
**29,200**  
**STUDENTS**  
HESA 20/21 (draft)

**TURNOVER**  
**c.£275M**  
20/21

**3,872**  
**STAFF**  
[HESA 19/20 draft]

**PORTFOLIO**  
BCU currently delivers  
across more than  
**1,000** Courses

**EMPLOYABILITY**  
**93%**  
IN WORK OR STUDY  
AFTER 15 MONTHS;  
67.9% in graduate jobs  
or study (17/18 leavers)

**INTERNATIONAL**  
We recruit students from over  
**100** COUNTRIES

# A few facts



- We work on course-related projects with companies and organisations like **Microsoft, Cisco, Jaguar Land Rover, Sky UK** and the **City of Birmingham Symphony Orchestra**.
- Several members of our academic staff (currently 11) are **National Teaching Fellows**—the most prestigious award for excellence in university teaching and learning.
- **93% of our research was recognised internationally** for originality, significance and rigour, of which 19% was judged world-leading (REF 2021).
- Ranked **4th in the UK** for social mobility, recognising how we help students from less advantaged backgrounds to succeed (Higher Education Policy Institute English Social Mobility Index 2022).
- We have around 50 **professional accreditations** for our courses from organisations including the Association of Chartered Certified Accountants, British Psychological Society, Chartered Institute of Architectural Technologists, Landscape Institute, Chartered Institute of Personnel and Development, Royal Institution of Chartered Surveyors, Royal Institute of British Architects, Institution of Engineering and Technology, Institution of Mechanical Engineers, and Health and Care Professions Council.



# WHERE WE ARE



# Investment



- The £62 million **Parkside Building** at the City Centre Campus provides a home for design-related courses as well as state-of-the art media facilities (Curzon Street Studios), with four industry-standard TV studios featuring the latest Sony equipment and a 'green screen' MILO studio.
- The £63 million **Curzon Building** provides teaching space for Birmingham City Business School, the School of English, the School of Law and the School of Social Sciences, together with a library, IT space and other student support facilities.
- A £57 million home for the **Royal Birmingham Conservatoire** opened at our City Centre Campus in autumn 2017.
- Our health courses are taught in the £30 million **Seacole Building**, where state-of-the-art facilities include a simulated operating theatre and hospital wards, a fully-equipped birthing room, a simulated home environment and a fully-functional radiography suite and 3D imaging diagnostic suite.
- A further £41 million investment in our **City South Campus** has seen the creation of specialist laboratories for sport and life sciences, and a home for our Education courses, which opened in 2018.
- Our facilities in Millennium Point have undergone a £6.5 million investment with a new maker area, engineering labs/equipment and IT equipment.



Millenium Point



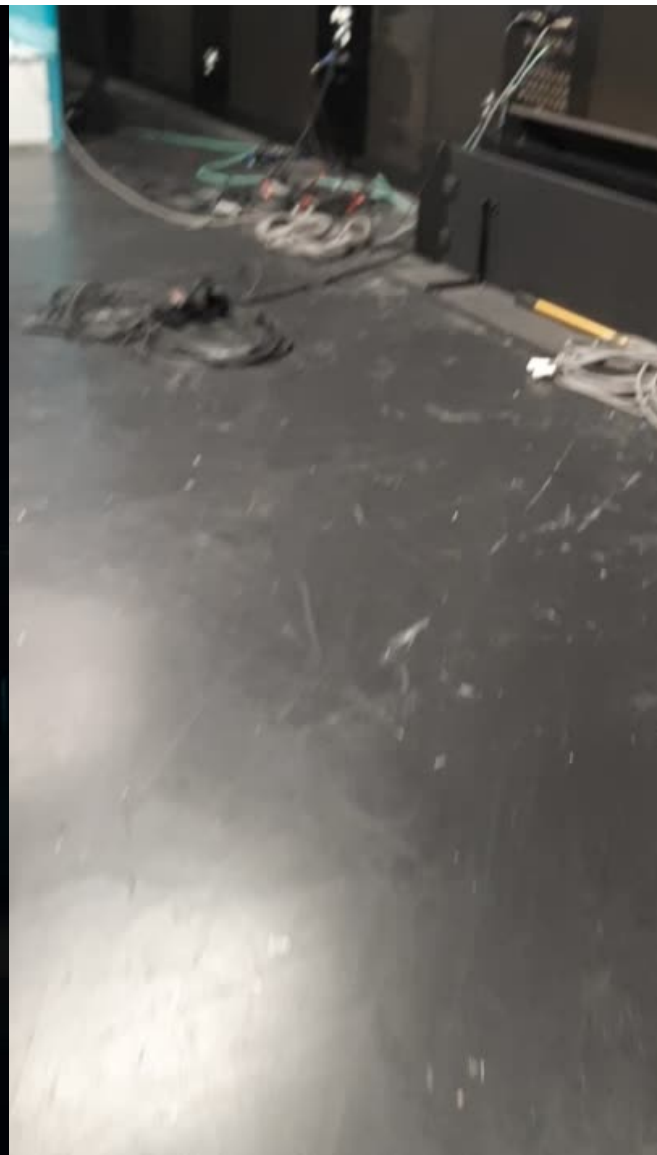
Yep, that's a real Starbucks inside the BCU buildings - one of many actually!





Curzon Building







# STEAMhouse

Our STEAM agenda drives new approaches by bringing together the creative disciplines with the STEM disciplines. The restored Belmont Works will open later this year – along with our STEAMhouse India centre in the Punjab.









# BCU Faculties



**COMPUTING,  
ENGINEERING  
AND THE BUILT  
ENVIRONMENT**

**ARTS, DESIGN  
AND MEDIA**

**BUSINESS, LAW  
AND SOCIAL  
SCIENCES**

**HEALTH,  
EDUCATION AND  
LIFE SCIENCES**



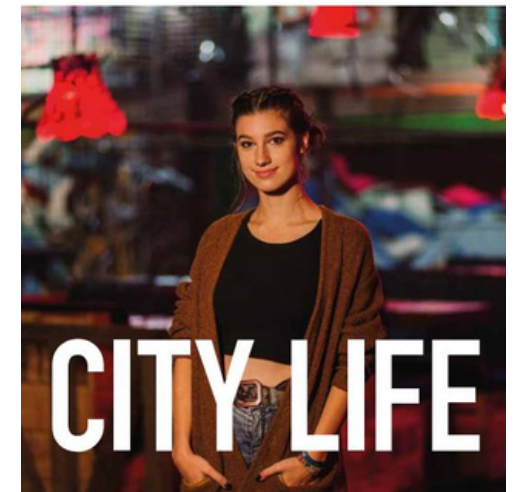
# Birmingham



- Second largest city after London
- 80-minute by train now but 49-minute in the future
- City Centre Campus



- **Central location**
- **The UK's second-largest city** with a population of over 1.1 million people. It is also the youngest major city in the UK, with under-20s accounting for 28% of its population (ONS 2020).





# A few facts about Brum



- **The highest quality of life** of any UK city outside the capital, ahead of international hotspots such as Los Angeles, Hong Kong, Rome, Atlanta and Dubai. (Mercer Quality of Living Report 2018).
- Ranked in the **top ten happiest cities in the UK to live and work**, ranking factors such as work-life balance and job satisfaction (CV-Library 2019).
- With 15.58% of its total land classed as 'green space' Birmingham has **more green spaces** than any other major regional UK city.
- At the heart of a **£144 billion regional economy** (Office for National Statistics 2019).
- Birmingham is on course to be one of the **50 most competitive cities in the world** by 2025 (Economist Intelligence Unit/Citi).
- Birmingham is home to around **43,000 companies** (ONS 2020) including 720 international firms (DueDil 2021).
- Over **85,000 students** study in the city at five universities (West Midlands Growth Company 2021).  
Digbeth named the '**coolest neighbourhood in Britain**' in 2018 (Sunday Times Homes).













**BIRMINGHAM CITY**  
University

# STUDY ABROAD

at Birmingham City University

2022/23





# Academic calendar



**Semester 1** –September to January

Nomination deadline –mid-May

Application deadline –1st June

**Semester 2**–January to May

Nomination deadline –mid-September

Application deadline –1st October

One Semester students: 60 credits required (3-4 classes per semester)

Two Semester students: 120 credits required (6-8 classes for the academic year)

We recommend that students take classes from within one School. Module options will be advised at application stage.

# Accommodation



- Typical cost of university/college accommodation starts at £125 per week (2022/23 prices).
- Accommodation is subject to availability and cannot be guaranteed.
- Over 2,000 well-equipped rooms; rent includes heating and water. Every student room in halls has internet access.
- Over 650 students are accommodated right next to our City Centre Campus in the University Locks development.
- Our Students' Union's own lettings agency, Birmingham City Student Homes, provides access to a range of safe and secure private rented properties in the city.





# GO ABROAD TEAM



Email for students:  
[Goabroad@bcu.ac.uk](mailto:Goabroad@bcu.ac.uk)

Instagram:  
[@bcugoabroad](https://www.instagram.com/bcugoabroad)